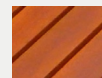




## INSTALLATION OPTIONS AND DIMENSIONS

Above ground bolt-fix	2000mm L x 1795mm W x 840mm H
Below ground bolt-fix	2000mm L x 1795mm W x 990mm H

## BATTEN MATERIAL OPTIONS

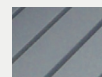


**HARDWOOD**  
Finished with 3 coats of water-based Intergrain Naturalstain, colour 'Jarrah'.

## FRAME MATERIALS AND FINISHES

Welded aluminium with powder coat finish.

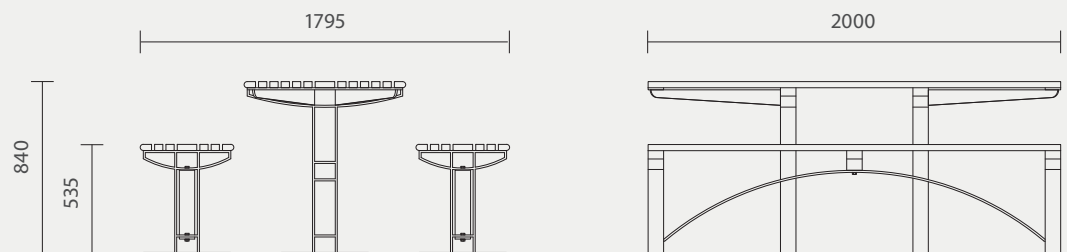
Stainless steel fasteners.



**RECYCLED PLASTIC**  
Furnitureform™ glass-reinforced HDPE, standard colour 'Charcoal'.

## WHEELCHAIR ACCESSIBLE

Designed to comfortably accommodate two wheelchairs.



Designed by  
Cox Urban Furniture  
info@coxurbanfurniture.com.au  
coxurbanfurniture.com.au

Distributed by Altiform,  
National Sales Hotline  
T. 1800 2584 3676  
sales@altiform.com.au

Copyright © 2012 Cox Urban Furniture.

Not to be reproduced in any form  
without prior written consent.