

TABLE SETTING - WHEELCHAIR ACCESSIBLE

PKL:TBS-1-DA2

PARKLINE
RANGE



FLAT-PACK OPTION

Table setting can be delivered fully assembled, or 'flat-packed' to minimise freight cost and energy use. All battens are factory-fitted to plates leaving only the two leg frames to be attached on site.

INSTALLATION OPTIONS AND DIMENSIONS

Freestanding	2200mm L x 1650mm W x 850mm H
Above ground bolt-fix	2200mm L x 1650mm W x 850mm H

MATERIALS AND FINISHES

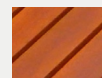
Leg frames - Aluminium with a powder coat finish.

Stainless steel fasteners.

WHEELCHAIR ACCESSIBLE

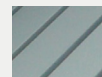
Designed to comfortably accommodate two wheelchairs.

BATTEN MATERIAL OPTIONS



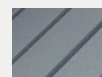
HARDWOOD

Finished with 3 coats of water-based Intergrain Naturalstain, colour 'Jarrah'.



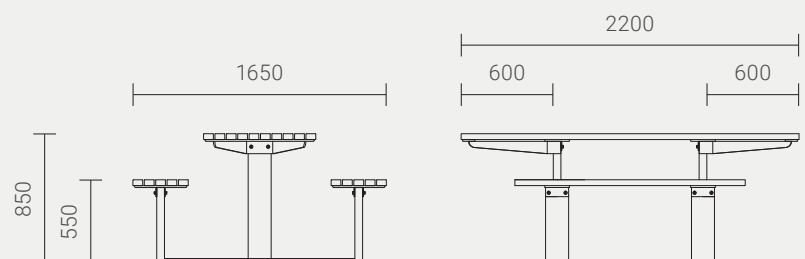
ALUMINIUM

Clear-anodised aluminium RHS with cast aluminium end-caps.



RECYCLED PLASTIC

Furnitureform™ glass-reinforced HDPE, standard colour 'Charcoal'.



Designed by
Cox Urban Furniture
info@coxurbanfurniture.com.au
coxurbanfurniture.com.au

Distributed by Altiform,
National Sales Hotline
T. 1800 2584 3676
sales@altiform.com.au

Copyright © 2012 Cox Urban Furniture.

Not to be reproduced in any form
without prior written consent.