



## COMPOSITION

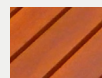
0 x Platforms	URB:TRI P1B
3 x Tables	URB:TRI T1B
9 x Seats	URB:SAT M100

## FRAME MATERIALS

Clear anodised aluminium with cast aluminium corners.

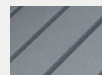
Stainless steel fasteners.

## BATTEN AND SEAT MATERIAL OPTIONS



### HARDWOOD

Finished with 3 coats of water-based Intergrain Naturalstain, colour 'Jarrah'.

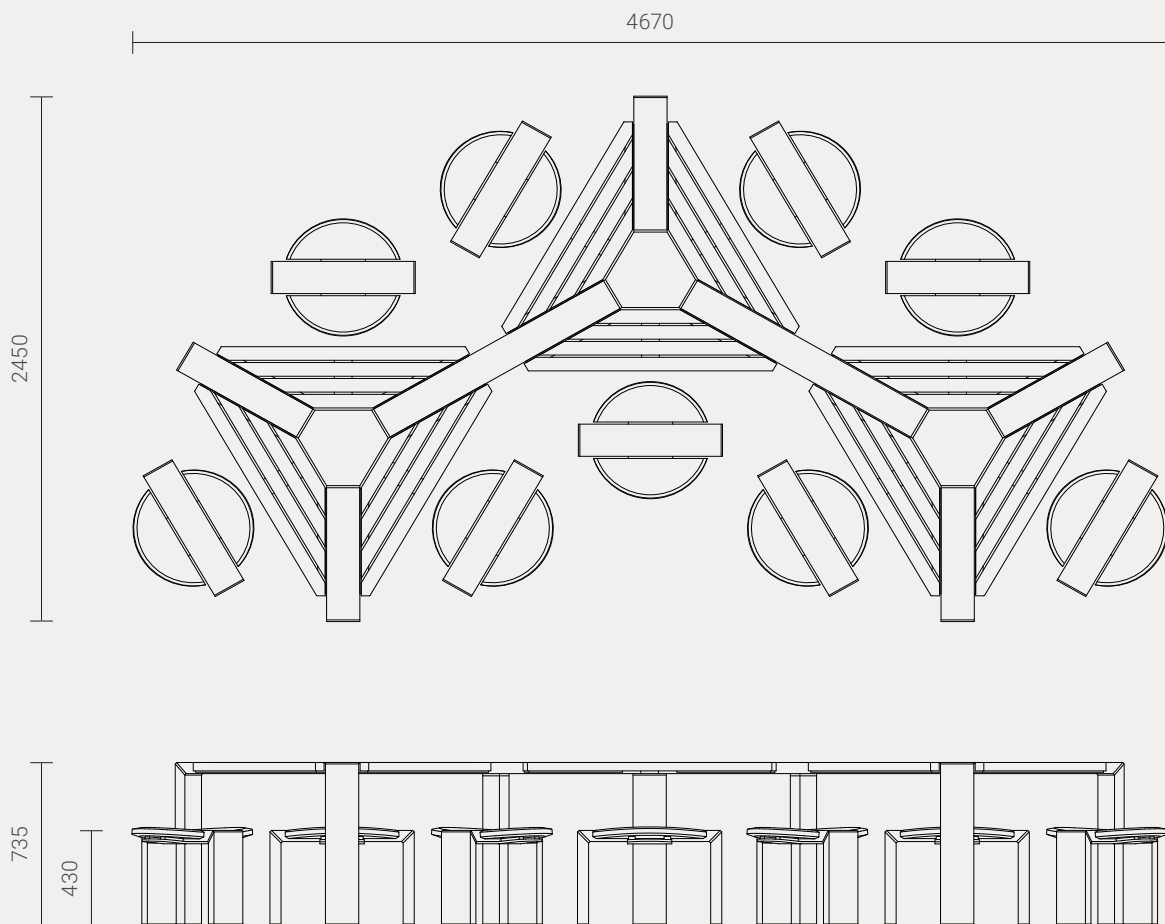


### RECYCLED PLASTIC

Furnitureform™ HDPE, standard colour 'Charcoal'.

INSTALLATION OPTIONS AND DIMENSIONS

Above ground epoxy-fix	4670mm L x 2450mm W x 735mm H
Above ground bolt-fix	4670mm L x 2450mm W x 735mm H
Below ground bolt-fix	4670mm L x 2450mm W x 885mm H



Designed by  
Cox Urban Furniture  
info@coxurbanfurniture.com.au  
coxurbanfurniture.com.au

Distributed by Altiform,  
National Sales Hotline  
T. 1800 2584 3676  
sales@altiform.com.au

Copyright © 2012 Cox Urban Furniture.

Not to be reproduced in any form  
without prior written consent.