

MIXED TABLE SETTING - WHEELCHAIR ACCESSIBLE
URB:TBS MB800 DA 8+2

URBAN EDGE
RANGE



INSTALLATION OPTIONS AND DIMENSIONS

| | |
|------------------------|--------------------------------|
| Above ground epoxy-fix | 2450mm L x 1935mm W x 865mm H |
| Above ground bolt-fix | 2450mm L x 1935mm W x 865mm H |
| Below ground bolt-fix | 2450mm L x 1935mm W x 1015mm H |

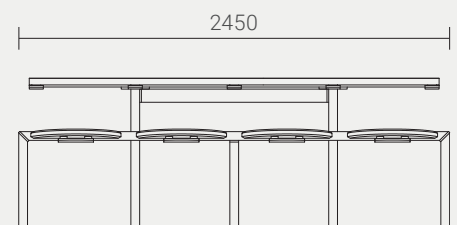
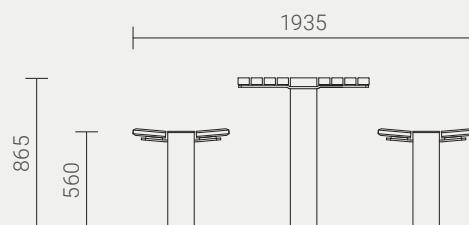
FRAME MATERIALS

Clear anodised aluminium with cast aluminium corners.

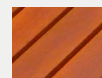
Stainless steel fasteners.

DDA COMPLIANT

Designed to comfortably accommodate two wheelchairs.

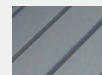


BATTEN AND SEAT MATERIAL OPTIONS



HARDWOOD

Finished with 3 coats of water-based Intergrain Naturalstain, colour 'Cedar'.



RECYCLED PLASTIC

Furnitureform™ glass-reinforced HDPE, standard colour 'Charcoal'.

Designed by
Cox Urban Furniture
info@coxurbanfurniture.com.au
coxurbanfurniture.com.au

Distributed by Altiform,
National Sales Hotline
T. 1800 2584 3676
sales@altiform.com.au

Copyright © 2018 Cox Urban Furniture.

Not to be reproduced in any form
without prior written consent.