



#### INSTALLATION OPTIONS AND DIMENSIONS

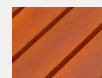
Above ground epoxy-fix	1935mm L x 650mm W x 735mm H
Above ground bolt-fix	1935mm L x 650mm W x 735mm H
Below ground bolt-fix	1935mm L x 650mm W x 885mm H

#### FRAME MATERIALS

Clear anodised aluminium with cast aluminium corners.

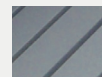
Stainless steel fasteners.

#### BATTEN AND SEAT MATERIAL OPTIONS



##### HARDWOOD

Finished with 3 coats of water-based Intergrain Naturalstain, colour 'Cedar'.



##### RECYCLED PLASTIC

Furnitureform™ glass-reinforced HDPE, standard colour 'Charcoal'.

