



#### INSTALLATION OPTIONS AND DIMENSIONS

Above ground bolt-fix	2000mm L x 1795mm W x 840mm H
Below ground bolt-fix	2000mm L x 1795mm W x 990mm H

#### FRAME MATERIALS AND FINISHES

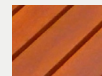
Welded aluminium with powder coat finish.

Stainless steel fasteners.

#### DDA COMPLIANT

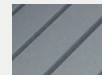
Designed to comfortably accommodate two wheelchairs.

#### BATTEN MATERIAL OPTIONS



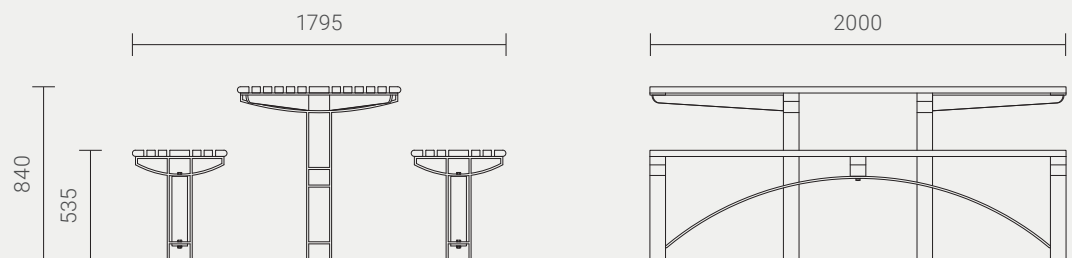
##### HARDWOOD

Finished with 3 coats of water-based Intergrain Naturalstain, colour 'Cedar'.



##### RECYCLED PLASTIC

Furnitureform™ glass-reinforced HDPE, standard colour 'Charcoal'.



Designed by  
Cox Urban Furniture  
info@coxurbanfurniture.com.au  
coxurbanfurniture.com.au

Distributed by Altiform,  
National Sales Hotline  
T. 1800 2584 3676  
sales@altiform.com.au

Copyright © 2012 Cox Urban Furniture.

Not to be reproduced in any form  
without prior written consent.