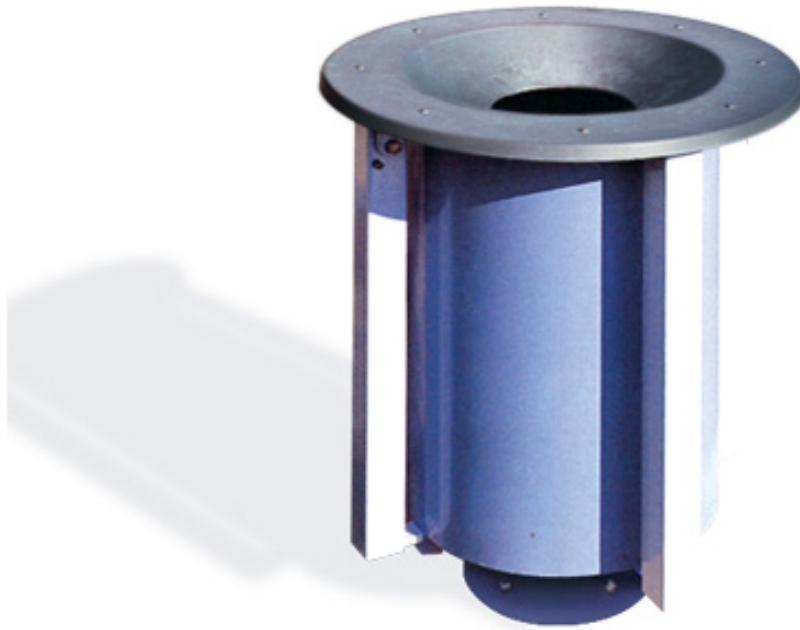


LITTERBIN

PMD:LTB-4A

PROMENADE  
RANGE



#### INSTALLATION OPTIONS AND DIMENSIONS

**Above ground bolt-fix**      790mm H × 600mm diameter lid

**Below ground bolt-fix**      940mm H × 600mm diameter lid

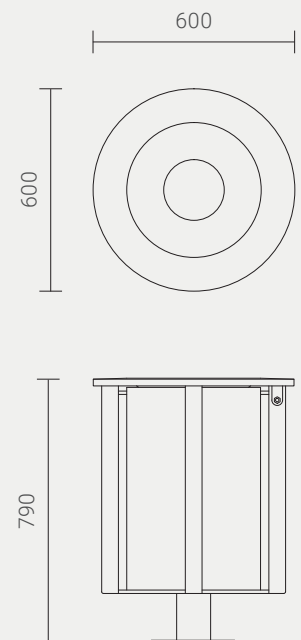
#### CAPACITY

62 litres - Removable galvabond steel liner with handles.

#### MATERIALS AND FINISHES

Leg-frame and body - Aluminium with powder coat finish.

Hinged lid - Spun stainless steel with satin polish finish.



Designed by  
Cox Urban Furniture  
info@coxurbanfurniture.com.au  
coxurbanfurniture.com.au

Distributed by Altiform,  
National Sales Hotline  
T. 1800 2584 3676  
sales@altiform.com.au

Copyright © 2012 Cox Urban Furniture.

Not to be reproduced in any form  
without prior written consent.