

## TABLE SETTING - WHEELCHAIR ACCESSIBLE

# PKL:TBS-1A-DA1

PARKLINE  
RANGE



### FLAT-PACK OPTION

Table setting can be delivered fully assembled, or 'flat-packed' to minimise freight cost and energy use. All battens are factory-fitted to plates leaving only the leg frames to be attached on site.

### INSTALLATION OPTIONS AND DIMENSIONS

**Above ground bolt-fix** 1850mm L x 1650mm W x 850mm H

**Below ground bolt-fix** 1850mm L x 1650mm W x 850mm H

### MATERIALS AND FINISHES

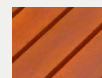
Legs and frames - Aluminium with a powder coat finish.

Stainless steel fasteners.

### DDA COMPLIANT

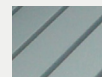
Designed to comfortably accommodate one wheelchair.

### BATTEN MATERIAL OPTIONS



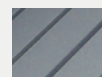
#### HARDWOOD

Finished with 3 coats of water-based Intergrain Naturalstain, colour 'Jarrah'.



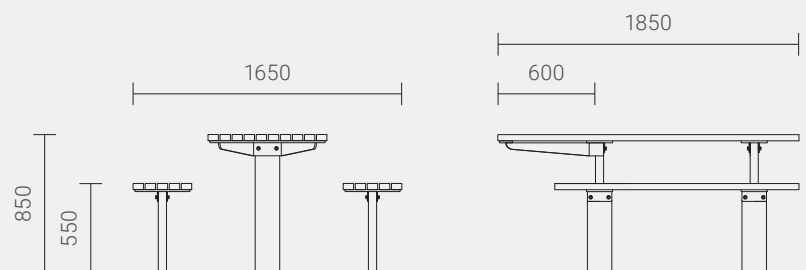
#### ALUMINIUM

Clear-anodised aluminium RHS with cast aluminium end-caps.



#### RECYCLED PLASTIC

Furnitureform™ glass-reinforced HDPE, standard colour 'Charcoal'.



Designed by  
Cox Urban Furniture  
info@coxurbanfurniture.com.au  
coxurbanfurniture.com.au

Distributed by Altiform,  
National Sales Hotline  
T. 1800 2584 3676  
sales@altiform.com.au

Copyright © 2012 Cox Urban Furniture.

Not to be reproduced in any form  
without prior written consent.