

# TABLE SETTING PKL:TBS-1

PARKLINE  
RANGE



## FLAT-PACK OPTION

Table setting can be delivered fully assembled, or 'flat-packed' to minimise freight cost and energy use. All battens are factory-fitted to plates leaving only the two leg frames to be attached on site.

## INSTALLATION OPTIONS AND DIMENSIONS

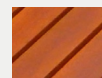
<b>Freestanding</b>	1650mm L x 1500mm W x 738mm H
<b>Above ground bolt-fix</b>	1650mm L x 1500mm W x 738mm H

## MATERIALS AND FINISHES

Leg frames - Aluminium with a powder coat finish.

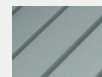
Stainless steel fasteners.

## BATTEN MATERIAL OPTIONS



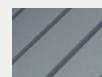
### HARDWOOD

Finished with 3 coats of water-based Intergrain Naturalstain, colour 'Jarrah'.



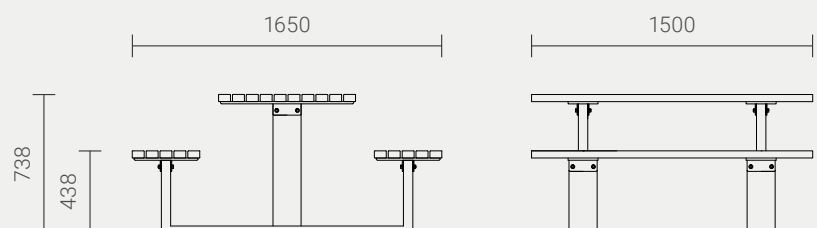
### ALUMINIUM

Clear-anodised aluminium RHS with cast aluminium end-caps.



### RECYCLED PLASTIC

Furnitureform™ glass-reinforced HDPE, standard colour 'Charcoal'.



Designed by  
Cox Urban Furniture  
info@coxurbanfurniture.com.au  
coxurbanfurniture.com.au

Distributed by Altiform,  
National Sales Hotline  
T. 1800 2584 3676  
sales@altiform.com.au

Copyright © 2012 Cox Urban Furniture.

Not to be reproduced in any form  
without prior written consent.