

# SEAT WITH BACK AND ARMRESTS PKL:SAT-1-ARM-2

PARKLINE  
RANGE



## FLAT-PACK OPTION

Seats can be delivered fully assembled, or 'flat-packed' to minimise freight cost and energy use. All battens are factory-fitted to plates leaving only the backrest, armrests and legs to be attached on site.

## INSTALLATION OPTIONS AND DIMENSIONS

**Above ground bolt-fix** 1500mm L x 500mm W x 780mm H

**Below ground bolt-fix** 1500mm L x 500mm W x 780mm H

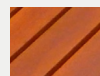
## MATERIALS AND FINISHES

Legs, frames and armrests - Aluminium, with a powder coat finish.

Timber or recycled plastic fitted to tops of armrests.

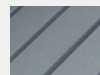
Stainless steel fasteners.

## BATTEN MATERIAL OPTIONS



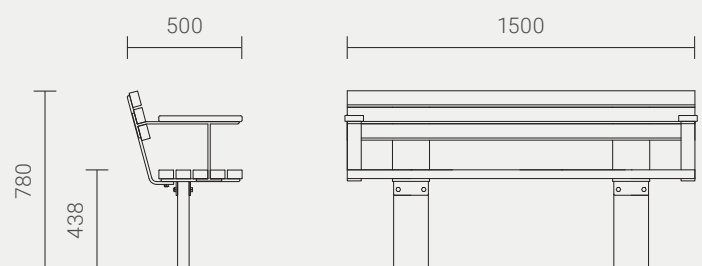
### HARDWOOD

Finished with 3 coats of water-based Intergrain Naturalstain, colour 'Jarrah'.



### RECYCLED PLASTIC

Furnitureform™ glass-reinforced HDPE, standard colour 'Charcoal'.



Designed by  
Cox Urban Furniture  
info@coxurbanfurniture.com.au  
coxurbanfurniture.com.au

Distributed by Altiform,  
National Sales Hotline  
T. 1800 2584 3676  
sales@altiform.com.au

Copyright © 2012 Cox Urban Furniture.

Not to be reproduced in any form  
without prior written consent.